

1

2

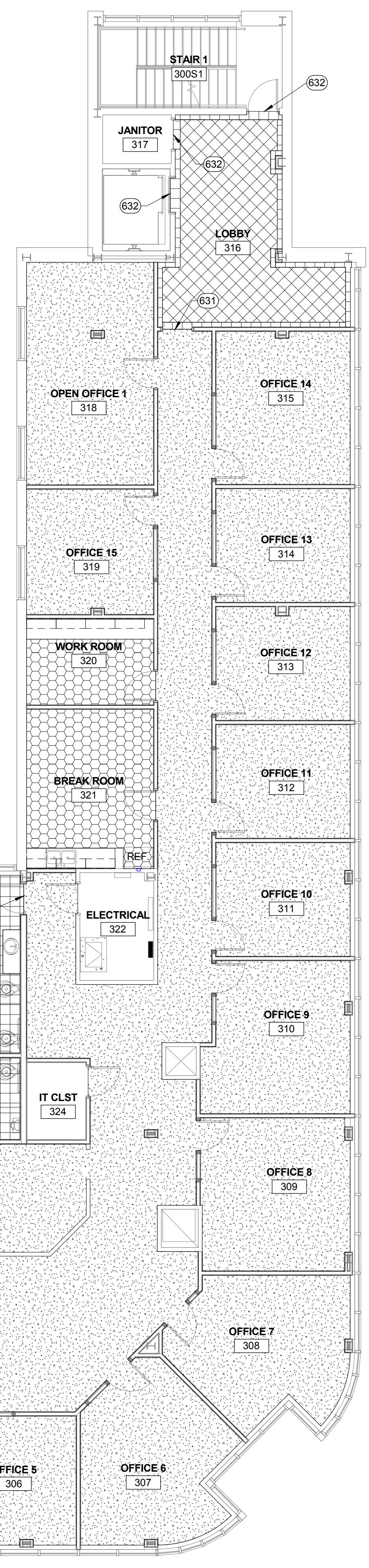
3

4

5

Rm #	Room Name	Floor	Wall	Base	Ceiling	Ceiling Hgt.	Notes
300	CORRIDOR	CPT-1	PT-1	WB	GYP BD/LAY-IN	8'-9 1/2" 9'-0"	SEE RCP
300S1	STAIR 1	CONC	PT-1	VB	EXP-1	---	
300S2	STAIR 2	CONC	PT-1	VB	EXP-1	---	
301	RECEPTION	GT-1	PT-1	WB	GYP BD	9'-0" 9'-6" 10'-0"	SEE RCP
302	OFFICE 1	CPT-1	PT-1	WB	LAY-IN	9'-0"	
303	OFFICE 2	CPT-1	PT-1	WB	LAY-IN	9'-0"	
304	OFFICE 3	CPT-1	PT-1	WB	LAY-IN	9'-0"	
305	OFFICE 4	CPT-1	PT-1	WB	LAY-IN	9'-0"	
306	OFFICE 5	CPT-1	PT-1	WB	LAY-IN	9'-0"	
307	OFFICE 6	CPT-1	PT-1	WB	LAY-IN	9'-0"	
308	OFFICE 7	CPT-1	PT-1	WB	LAY-IN	9'-0"	
309	OFFICE 8	CPT-1	PT-1	WB	LAY-IN	9'-0"	
310	OFFICE 9	CPT-1	PT-1	WB	LAY-IN	9'-0"	
311	OFFICE 10	CPT-1	PT-1	WB	LAY-IN	9'-0"	
312	OFFICE 11	CPT-1	PT-1	WB	LAY-IN	9'-0"	
313	OFFICE 12	CPT-1	PT-1	WB	LAY-IN	9'-0"	
314	OFFICE 13	CPT-1	PT-1	WB	LAY-IN	9'-0"	
315	OFFICE 14	CPT-1	PT-1	WB	LAY-IN	9'-0"	
316	LOBBY	GT-1	PT-1	WB	GYP BD	9'-0" 9'-6" 10'-0"	SEE RCP
317	JANITOR	CONC	PT-1	VB	LAY-IN	9'-0"	
318	OPEN OFFICE 1	CPT-1	PT-1	WB	LAY-IN	9'-0"	
319	OFFICE 15	CPT-1	PT-1	WB	LAY-IN	9'-0"	
320	WORK ROOM	VT	PT-1	VB	LAY-IN	9'-0"	
321	BREAK ROOM	VT	PT-1	VB	LAY-IN	9'-0"	
322	ELECTRICAL	CONC	PT-1	VB	EXP-1	---	SEE RCP
323	WOMEN'S	PFT	PWT	TB	GYP BD	8'-0"	SEE RCP
324	IT CLST	CONC	PT-1	VB	LAY-IN	9'-0"	
326	MEN'S	PFT	PWT	TB	GYP BD	8'-0"	SEE RCP
327	CLST	CPT-1	PT-1	VB	LAY-IN	9'-0"	
328	WORK ROOM/FILE STORAGE/SUPPLY	VT	PT-1	VB	LAY-IN	9'-0"	
329	OPEN OFFICE 2	CPT-1	PT-1	WB	LAY-IN	9'-0"	
330	OFFICE 17	CPT-1	PT-1	WB	LAY-IN	9'-0"	
331	OFFICE 18	CPT-1	PT-1	WB	LAY-IN	9'-0"	
332	OFFICE 19	CPT-1	PT-1	WB	LAY-IN	9'-0"	
333	ELEV MECH ROOM	CONC	PT-1	VB	EXP-1	---	

MATERIALS LEGEND				
NO.	DESCRIPTION	COLOR & MATERIAL SPECIFICATIONS	MANUFACTURER/SUPPLIER	NOTES
<b>FLOORS</b>				
CPT-1	CARPET	MODERN FOUNDATION 8M0280630R BAVARIAN GREEN 800352 GLUE DOWN	BENTLEY PRINCE STREET	
GT-1	GRANITE TILE	SUSNET RED 12" X 12" FIELD (HONED FINISH) 12" X 6" PERIMETER (POLISHED FINISH)	ANCOR GRANITE TILE INC.	SEE FINISH FLOOR PLAN (I-100) FOR LOCATIONS
CONC	CONCRETE			
VT	VINYL TILE	NATURAL CREATIONS EARTH CUTS, TP501 SIERRA TAUPE 18" X 18"	ARMSTRONG	
WD	HARDWOOD	TO BE SELECTED BY OWNER		
PFT	PORCELAIN FLOOR TILE	READY TO WEAR, HAND IN GLOVE 12" X 12"	CROSSVILLE	STACKED BOND ALIGN FLOOR & WALL JOINTS
<b>WALLS</b>				
PT-1	PAINT	516-1 OFF WHITE	PPG	
PT-2	PAINT	417-4 CAMEL	PPG	
VWC	VINYL WALL COVERING	5516MS/4153 MADRAS SILK NATURAL	MDC	
GT-1	GRANITE TILE	SUSNET RED 12" X 12" HONED FINISH	ANCOR GRANITE TILE INC.	
PWT	PORCELAIN WALL TILE	READY TO WEAR, HAND IN GLOVE 12" X 12"	CROSSVILLE	STACKED BOND ALIGN FLOOR & WALL JOINTS
<b>CEILING</b>				
PT-1	PAINT	516-1 OFF WHITE	PPG	
PT-2	PAINT	417-4 CAMEL	PPG	
EXP-1	PAINTED EXPOSED STRUCTURE	516-1 OFF WHITE	PPG	
LAY-IN	2 X 2 ACOUSTIC LAY-IN TILE WITH GRID	2" X 2" ANGLED TEGULAR CIRRUS TILE WITH WHITE GRID	ARMSTRONG	SEE SPECIFICATIONS
<b>BASE</b>				
WB	3/4" X 5 1/2" WOOD BASE	STANDARD CHERRY	ARMSTRONG	
VB	4" VINYL BASE, COVED	COLOR INTEGRATED, 16 SAND	ARMSTRONG	
GT-1	GRANITE TILE	SUSNET RED 12" X 12" HONED FINISH	ANCOR GRANITE TILE INC.	
TB	PORCELAIN TILE BASE	READY TO WEAR, HAND IN GLOVE 12" X 12"	CROSSVILLE	STACKED BOND ALIGN FLOOR & WALL JOINTS



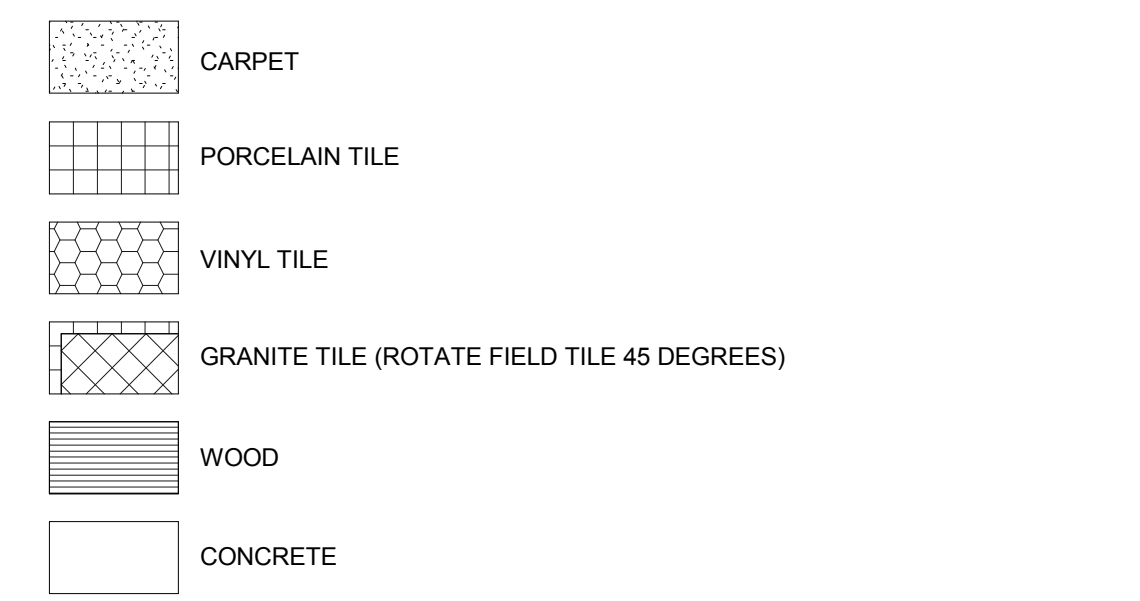
GENERAL NOTES

- A. THIS SHEET LISTS THE COLORS, PATTERNS AND TEXTURES REQUIRED FOR INTERIOR FINISHES, INCLUDING BOTH FACTORY APPLIED COLORS THAT ARE EXPOSED TO VIEW IN THE FINISHED CONSTRUCTION. REQUIREMENTS FOR QUALITY AND METHOD OF INSTALLATION ARE COVERED IN THE APPROPRIATE SECTIONS OF THE SPECIFICATIONS.
- B. FLOORING MATERIAL SHALL BE PROVIDED TO MATCH THE DESIGNATIONS SHOWN ON THE MATERIALS LEGEND. SCRIBE AND CUT FLOORCOVERINGS TO BUTT NEATLY AND TIGHTLY TO VERTICAL SURFACES AND PERMANENT FIXTURES INCLUDING BUILT-IN FURNITURE, CABINETS, PIPES, OUTLETS, EDGINGS, DOORFRAMES, THRESHOLDS AND NOSING. EXTEND FLOORING INTO TOE SPACES, DOOR REVEALS, CLOSETS, AND SIMILAR OPENINGS. MAINTAIN REFERENCE MARKERS, HOLES AND OPENINGS THAT ARE IN PLACE OR MARKED FOR FUTURE USE WITH NONPERMANENT, NONSTAINING MARKING DEVICE.
- C. BASE MATERIALS SHALL BE PROVIDED TO MATCH DESIGNATIONS SHOWN ON THE MATERIALS LEGEND.
- D. INTERIOR WALL COLOR SHALL APPLY TO THE ENTIRE WALL SURFACE, INCLUDING REVEALS, VERTICAL FURRED SPACES, GRILLES, DIFFUSERS, ELECTRICAL AND ACCESS PANELS, AND ALL PIPING AND CONDUIT ADJACENT TO WALL SURFACES UNLESS OTHERWISE SPECIFIED. ITEMS NOT SPECIFIED IN OTHER PARAGRAPHS SHALL BE PAINTED TO MATCH ADJACENT WALL SURFACE. WALL MATERIALS SHALL BE PROVIDED TO MATCH COLORS DESIGNATED ON THE MATERIALS LEGEND.
- E. CEILING COLORS SHALL APPLY TO CEILING SURFACES INCLUDING SOFFITS, FURRED DOWN AREAS, GRILLES, DIFFUSERS, REGISTERS, AND ACCESS PANELS. CEILING COLOR SHALL ALSO APPLY TO JOIST AND CONDUIT AND PIPING WHERE JOISTS AND DECK ARE EXPOSED AND REQUIRED TO BE PAINTED. CEILING MATERIALS SHALL BE PROVIDED TO MATCH COLORS DESIGNATED ON THE MATERIALS LEGEND.
- F. MISCELLANEOUS ITEMS SHALL BE PROVIDED TO MATCH THE COLORS SHOWN ON THE MATERIALS LEGEND.
- G. PROVIDE TRANSITION STRIPS AT DISSIMILAR FLOOR MATERIALS OF VARYING THICKNESS - REFER TO SPECIFICATION.
- H. AT FLOOR MATERIAL TRANSITIONS WHERE MATERIAL ADJACENT TO GRANITE/PORCELAIN TILE IS THINNER (CARPET, V.C.T. ETC), FLOAT FLOOR UNDER THINNER MATERIAL TO FINISHED THICKNESS OF GRANITE/PORCELAIN TILE.

KEY NOTES

- AS INDICATED BY: (#)
- 631 PROVIDE ALUMINUM SCHLUTER TRIM (SCHIENE) AT EDGE OF GRANITE/CERAMIC TILE.
  - 632 PROVIDE ALUMINUM SCHLUTER TRIM (RENO-RAMP) AT EDGE OF GRANITE.
  - 634 PROVIDE MARBLE THRESHOLD

FINISH FLOOR LEGEND



TITLE LUTHER PARTNERSHIP

10/28/2015

PARKHILL SMITH & COOPER

FFB FORT WORTH

100% CONSTRUCTION DOCUMENTS

1000 FOREST PARK BLVD, FORT WORTH, TEXAS 76110

KEY PLAN

NO.	DATE	DESCRIPTION
-	10/28/2015	100% CONSTRUCTION DRAWINGS
ISSUING OFFICE: ABILENE PROJECT NO: 8199.15		

FINISH FLOOR PLAN - THIRD FLOOR

I-103\*

1 FINISH FLOOR PLAN - THIRD FLOOR 1/8" = 1'-0"

10/10/2015 5:23:17 PM

D

C

B

A

1

2

3

4

5